



On September 30 a day before harvesting the field area around the plots was tilled to clean up small weeds that had come back. The one application of Roundup proved sufficient to control weeds for the season in the beets.



Here are some of the beets harvested from the control plot prior to being cleaned.

Handwritten signature
10/4/13



The beet tops were cut from the roots and laid out on a separate clean trash bag and were left for sampling after the roots had been cleaned dried and quarter before sampling.



Here one of the larger beet roots can be seen on the left weighing in at just over 5 ½ lbs. Above right is a two bucket system we used to clean the roots of heavy soil deposits and a final dip in clean water before setting the roots out on a new clean trash bag.

Walt/4/13

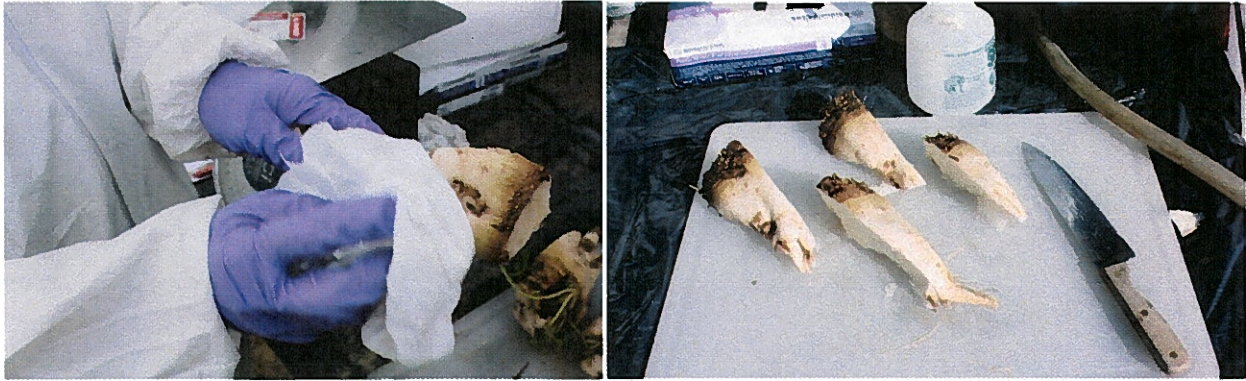
Ethofumesate/Beet (Sugar)
ID No. 11126.13-WA31
Groenendale



Above is one of the sets of beets for the control sample that were cleaned and air drying slightly before being processed. Below is one of the treated samples that was harvested after the control samples were bagged up and placed in a separate cooler on Blue Ice.



Admick/13



Here Wilson is patting dry a quartered root that still had some moisture on it prior to putting this quarter into a sample bag. Above right, a root can be seen quartered two pieces pushed to the top and two toward the bottom of the cutting board. These are opposite quarters. One set from each root was chosen and placed in the bag after cutting.



The tops were then gathered in groups of four tops and cut into approximate thirds. The first grouping picture to the upper left the leafy tops were bagged in the sample. The second group above right the middle section was placed into the sample bag. The last grouping below the lower third was cut off and placed into the bag to give a good sampling of all the tops from the beets. Then place into the appropriate untreated or treated cooler on Blue Ice.



All samples were then driven in a canopied pickup truck to the freezer where the coolers were walked into the freezer area and samples were transferred to the appropriate freezer by hand and times recorded.

Wilson
11/4/13